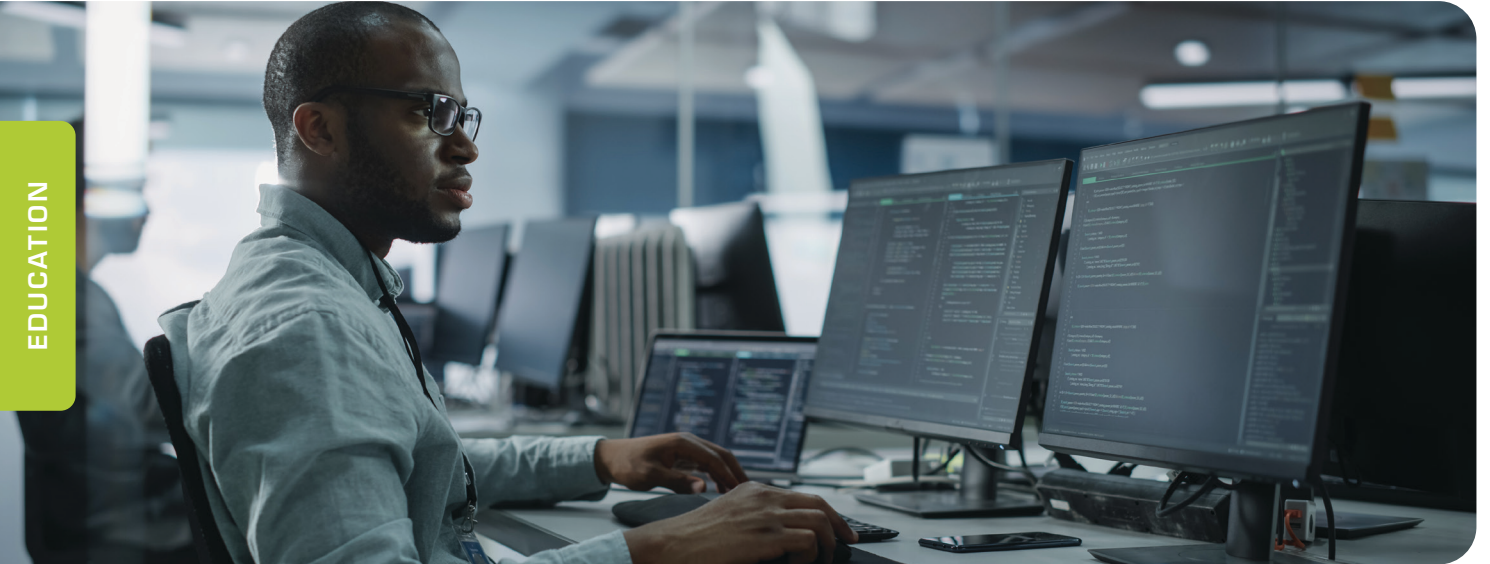


assessmentQ

Extra staging environments

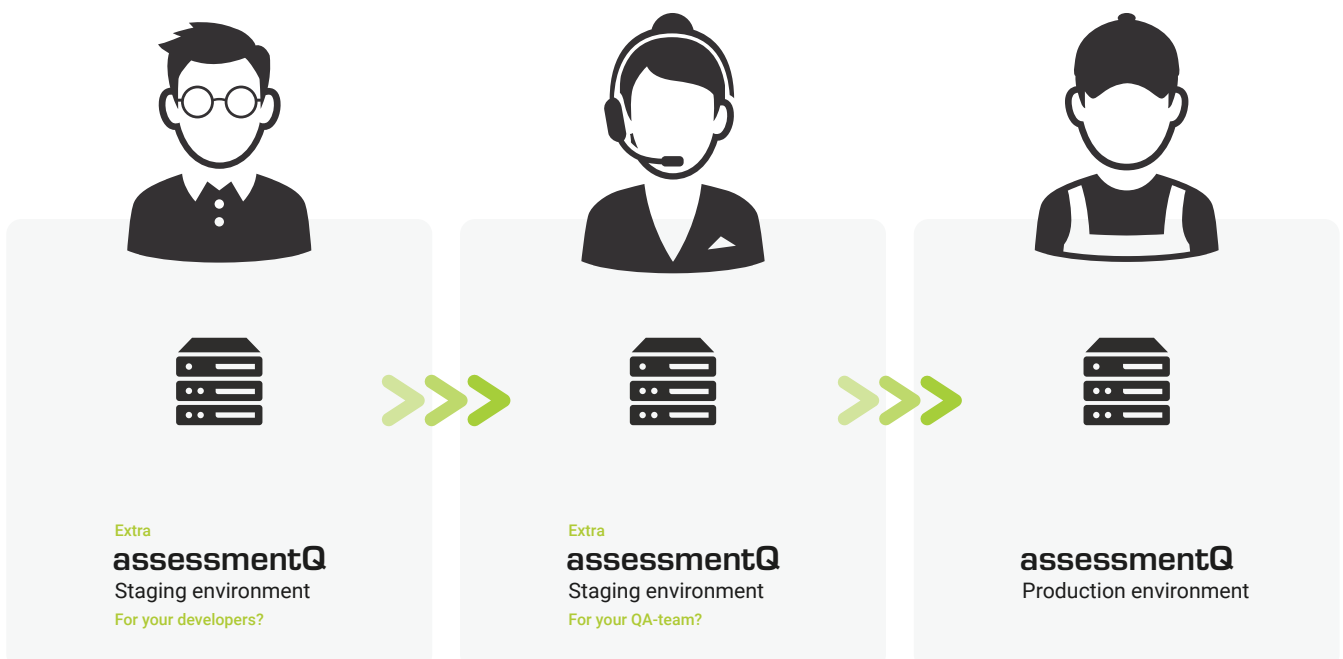
EDUCATION



assessmentQ is a **versatile end-to-end platform** for online exams and exercises. While you can use it as a standalone SaaS solution, **you can also integrate assessmentQ** in your bigger technology ecosystem. To support your custom development needs, assessmentQ comes by default with API credentials for your production environment.

Extra staging environments needed? No problem

We are aware that most developers **prefer to work in their own staging environment**, so others cannot break or interfere with their code. In that case, one staging environment does not suffice. That's why assessmentQ also offers **optional extra staging environments** for development purposes.



Features & limitations

- › A staging environment always **mirrors the assessmentQ version that is “live”** on the production environment.
- › Staging environments **will be updated 2 weeks before a new version of assessmentQ is being released** on the production environment. As a result, new features and API extensions will become available 2 weeks before a new release to production.
- › We do everything we can to **ensure the same high uptime** of the staging environments as for the production environment of assessmentQ. Nevertheless, we may need to perform announced (~ new product release) or unannounced updates resulting in a temporary downtime of the staging environments during business hours.
- › We **don't guarantee automatic upscaling** of the staging environment cloud infrastructure like we do with the production environment. As a result:
 - › Some API calls might be slower on the staging environment than on the production environment.
 - › Some API limits (paging, throttling...) might be lower on the staging environment than on the production environment.
- › We may shut down a staging environment if it impacts our underlying infrastructure in a negative way. For example, if developers abuse or try to bypass the API limitations.
- › **Data seeding and data clean-up** in a staging environment are not included. As a customer, you can do this yourself via the UI or API.
- › Copying data from other (staging or production) environments is not included.

Support

Support will be registered as described in the support contract.

Interested?

For more information and pricing, contact our sales team directly via education@televic.com.

BELGIUM - HQ

Leo Bekartlaan 1
8870 Izegem
Belgium

E-mail education@televic.com
Tel. [+32 51 79 14 98](tel:+3251791498)

UK

3000 Aviator Way
Manchester Business Park
Manchester
M22 5TG
United Kingdom

E-mail d.minta@televic.com
Tel. [+32 51 30 30 45](tel:+3251303045)

FRANCE

120, Avenue Clément Ader
59118 Wambrechies
France

E-mail d.verbeke@televic.com
b.wylin@televic.com
Tel. [+32 51 30 30 45](tel:+3251303045)